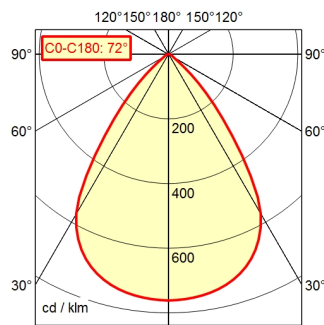


CE



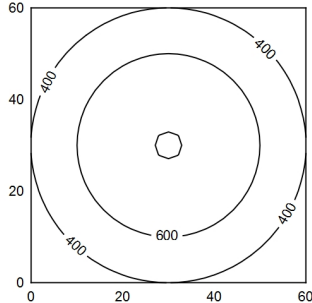
CEE 7/XVI

A60 | 100.0% Φ : 295 lm



60 x 60 cm Φ : 295 lm

Em: 529 lx
Emax: 806 lx
Emin: 194 lx



light source
work equipment
connected load
power consumption
standby
power factor
luminous flux
luminous efficiency
light distribution
direct ratio
beam angle
colour temperature
colour temperatur
color rendering index (CRI)
chromaticity tolerance LED
glare control
system of protection
class of protection
technology
housing
cover
arm
weight (net)
mains lead
fastening
special features

LED module
electronic plug-in transformer
100-240 V, 50/60 Hz; secondary 5 V, DC
env. 4 W
env. 0,3 W
env. 0,97
approx. 295 lm
approx. 74 lm/W
direct
approx. 100 %
72°
warm white
approx. 3.000 K
>= 80
< 3 SDCM
screen
IP 20
II with plug-in power supply, III without plug-in
power supply
continuously dimmable
plastic; untreated; umbrgr
25
tubular aluminium section; anodized; tubular
section upright; titanium
env. 0,97 kg
approx. 1,85 m; mains plug; CEE 7/XVI
adaptor (accessory); table clamp (accessory); table
base
push button in luminaire head